

Evluent D

Manual

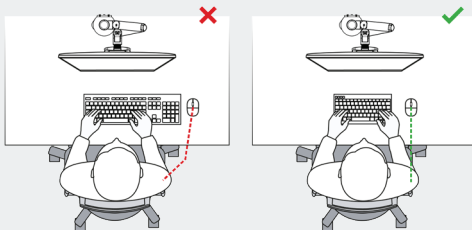


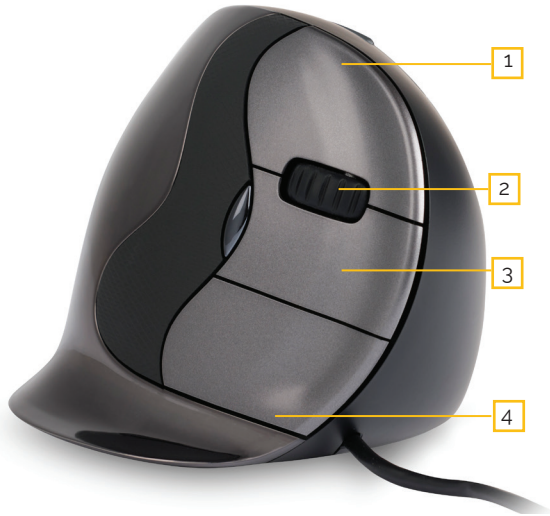
Vertical mouse Evoluent D

With a standard mouse, the wrist is fully turned, i.e. the palm faces downwards. This is not a natural posture.

When you place your wrist in the 'handshake grip' position, it has assumed a neutral posture. This is easier to maintain and is, at the same time, more pleasant. And the more comfortable you are sitting in front of your computer, the more productive you are.

The Evoluent Mouse is the most advanced vertical mouse in the BakkerElkhuizen product portfolio.





1

2

3

4



5

6

Standard button settings

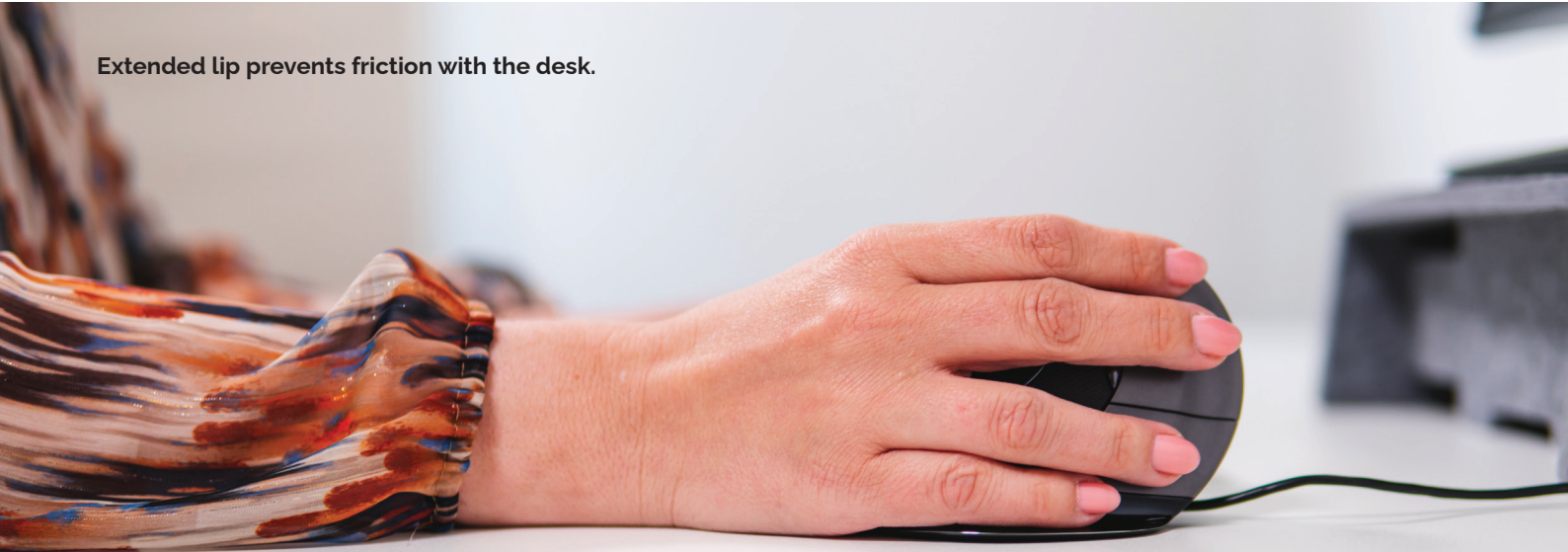
- 1 Top button - left mouse click
- 2 Scroll wheel - forward
- 3 Middle button - autoscroll
- 4 Lower button - right mouse click
- 5 Upper thumb button - back
- 6 Lower thumb button -
no function without driver

Set speed

Press the button on the side of the mouse to set the speed. Current setting can be read from the indicator lights on the top of the mouse.



Extended lip prevents friction with the desk.

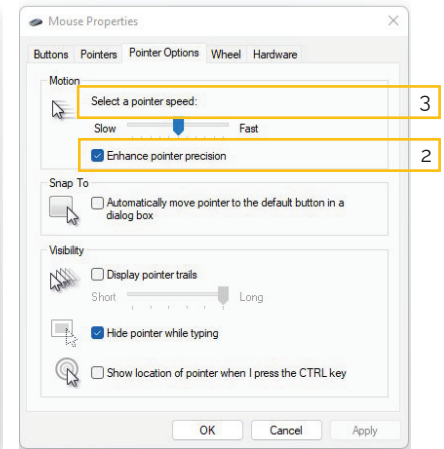
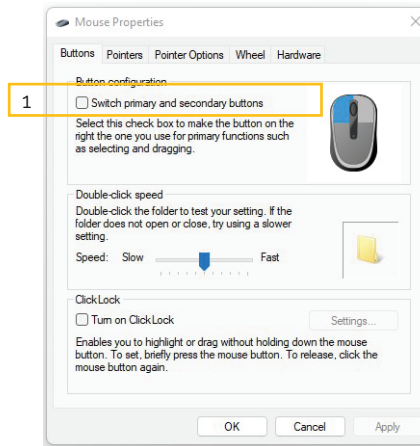


Installing with windows

Before connecting the Evoluent mouse, go to control panel, add or remove programmes. Uninstall any installed Evoluent Mouse Managers and other mouse software, except the touchpad driver. If no mouse software is listed, skip this step.

Before connecting the Evoluent mouse*, go to control panel, mouse:

1. Make sure the checkmark on primary and secondary buttons swap is off. Then under options for the pointer, adjust the following two things.
2. Make sure the checkmark on improve pointer precision is off.
3. Move the pointer speed slider to the middle position.

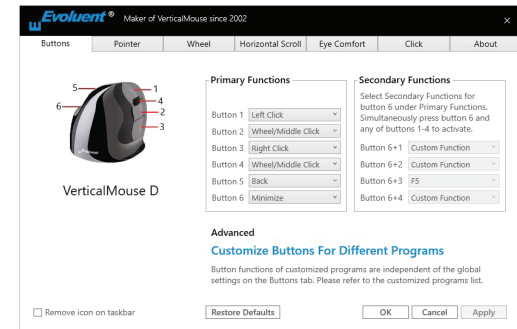


*Connecting the mouse

Plug the USB connector into a USB port on the computer.

Mouse Manager functions

- > Disabled
- > Left latch
- > Right latch
- > Scroll wheel / middle click
- > Alt
- > Auto-pan
- > Back
- > Backspace
- > Close
- > Copy
- > Ctrl
- > Cut
- > Delete
- > Double click
- > Zoom
- > Cut
- > Delete
- > Double click
- > Drag and scroll
- > Enter
- > Esc
- > Explorer
- > Eye comfort
- > F1-F12
- > Forward
- > Side-to-side scrolling
- > Keystroke recording
- > Launch application
- > Maximise
- > Minimising
- > Page down
- > Page up
- > Paste
- > PrintScreen
- > Run
- > Secondary functions
- > Shift
- > Hide/show desktop
- > Space
- > Start
- > Switch application
- > Tab
- > Undo



Adaptation of the Evoluent mouse

Download the latest iOS or windows driver for your Evoluent mouse. The drivers can be found on our product page of the Evoluent D wireless mouse.

Driver

For programming the buttons, you can optionally install the Evoluent Mouse Manager (driver). After the installation is complete, you can programme the mouse's buttons. You can even set different functions for each application! See the list above for the optional functions.

Driver

1. Setting the speed of the scroll wheel
2. Using the click lock, you can keep the left mouse button activated. You can deactivate it by clicking again.
3. The auto-click function provides an automatic click in an area to be clicked after a set time.



BakkerElkhuizen

Taalstraat 151

5261 BC Vught

The Netherlands

tel. 036 546 7265

email. info@bakkerelkhuizen.com

All rights reserved. All trade names are registered trademarks of the respective manufacturers. All specifications are subject to subject to change without notice.



**Bakker
Elkhuizen**